

MESCA HEIGHTS



Somabay

Glistening on an idyllic peninsula under the Red Sea's year-round sun, Somabay is a paradise getaway famed for its clear sapphire waters, white sandy beaches and intricate tapestry of coral reefs, upping its exclusivity factor by mere topography.

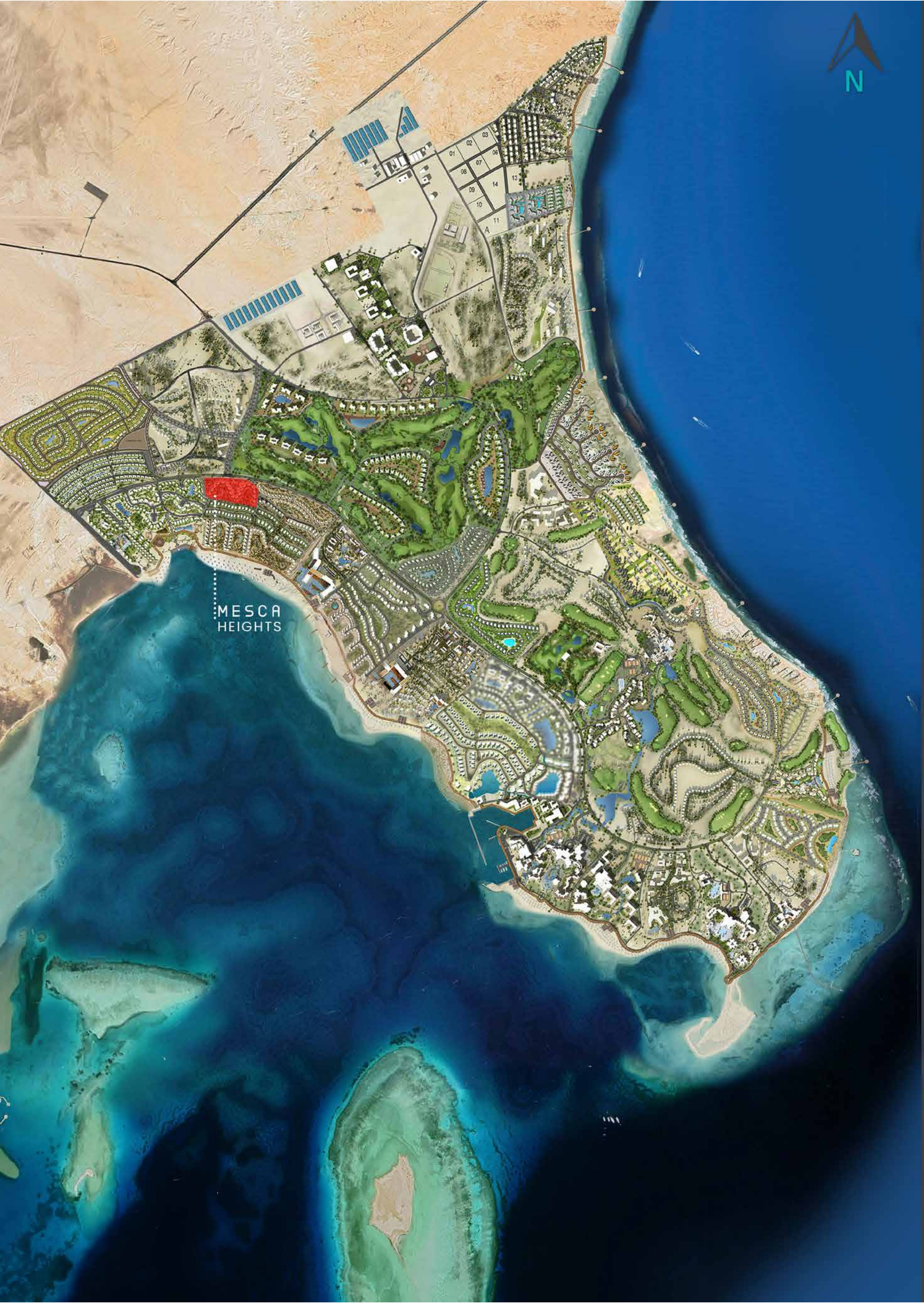
Nestled on 10 million square meters of lush land, life at Somabay is where fantasy-scapes follow you wherever you go and sundrenched activities take infinite elevating forms. Expertly conceived to evoke a laid-back European feel, every aspect of the heavenly development is sympathetic to nature, painting colorful experiences around its lively marina and soul-soothing jetty, so you can take recharge or decelerate.

Home to 5 luxury resort hotels and a signature portfolio of residential properties, Somabay's one-of-a-kind settings with its full complement of premium amenities are the stage for incomparable experiences alongside friends and family.



MESCA Heights Location

MESCA
HEIGHTS





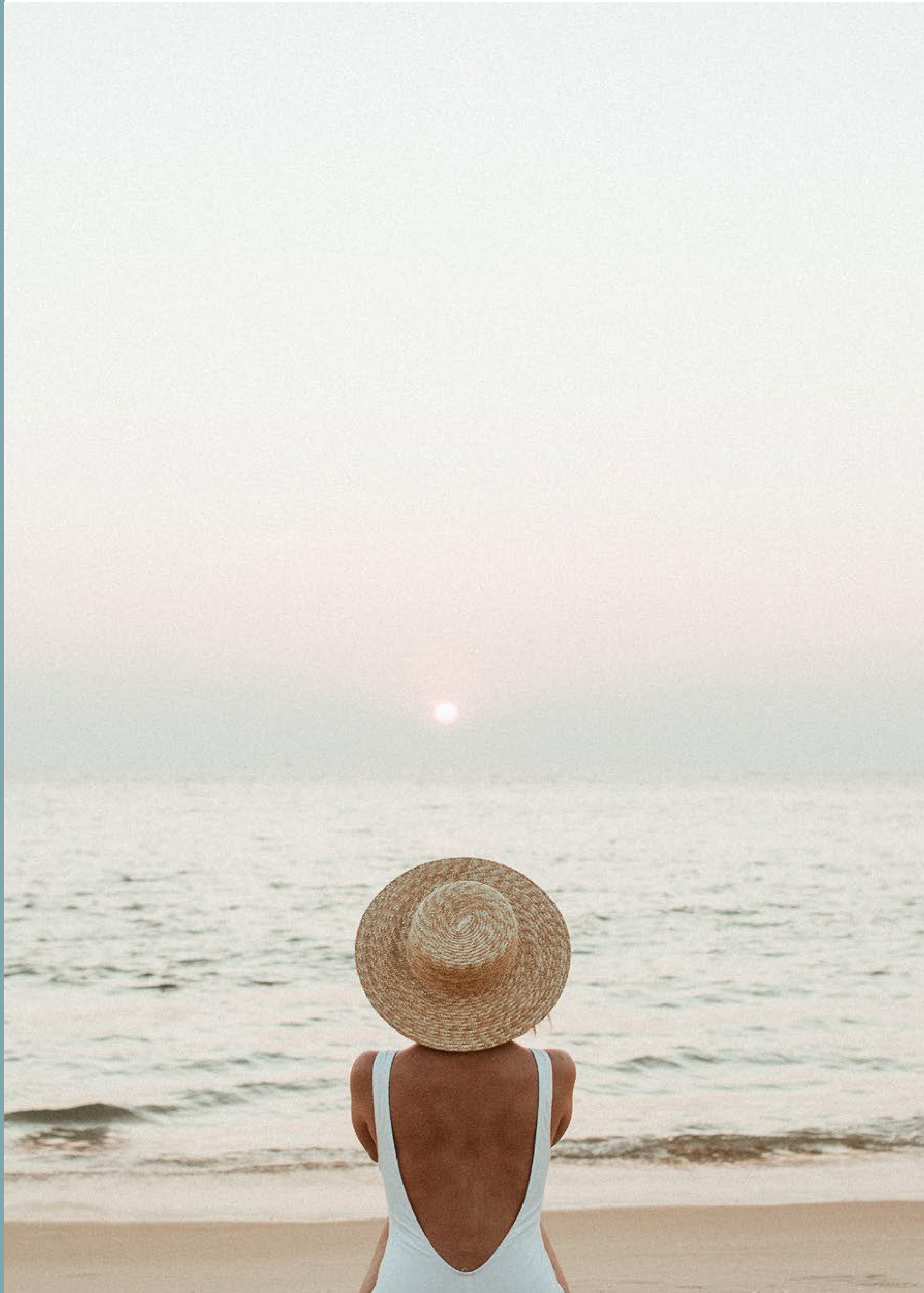
- M 1- Apartments - G+1 - 4 keys
- M 2- Apartments - G+1 - 3 keys
- M 3- Apartments - G+2 - 6 keys



MESCA HEIGHTS Edition.

Step into a sanctuary of uninterrupted calm where iridescent blues, and dazzling gold meet white contemporary design, straight before Somabay's open sea.

Mesca Edition is an exclusive invitation to marvel at raw simplicity from an elevated perspective, thanks to a unique leveling technique that lends each home a unique air of privacy while allowing residents to forge an unobscured connection with the natural world —where limitless tranquility and recreation land at every door.



An Amphitheatre of Sky, Sand & Sea.

The elemental beauty of Mesca Edition lies in an innovative design concept that promises open views for all homeowners alike. Gracefully poised on different elevations, each unit provides an amphitheater of sky, sand and sea to welcome 360 views of natural beauty, and daylight into your home.

Masterplanned in absolute harmony with its natural surroundings, Mesca Edition is simply taking in stunning sunset as you lounge in your terrace with a cup of coffee or sea-gaze from your bedroom as the golden sun sets peacefully into the deep blue sea.

A close-up photograph of a woven straw hat and a pair of sunglasses. The hat is made of light-colored straw with a tight, circular weave pattern. The sunglasses have dark frames and brown lenses. They are resting on a light-colored, textured surface, possibly a table or a piece of fabric. The lighting is soft, creating gentle shadows.

**STAND ALONE VILLA
EDITION**



Exteriors









Interiors

A modern living room interior featuring a light-colored, modular sofa with several pillows, including one dark accent pillow. In front of the sofa is a low, rectangular coffee table with a light top and dark base. To the left, there is a contemporary chair with a dark frame and light upholstery. A large potted plant stands to the left of the sofa. To the right, a tall, thin floor lamp with two adjustable shades is visible. The room has a large window or glass door on the right side, and the ceiling is equipped with a track lighting system. The overall aesthetic is clean and minimalist.













Floor Plans



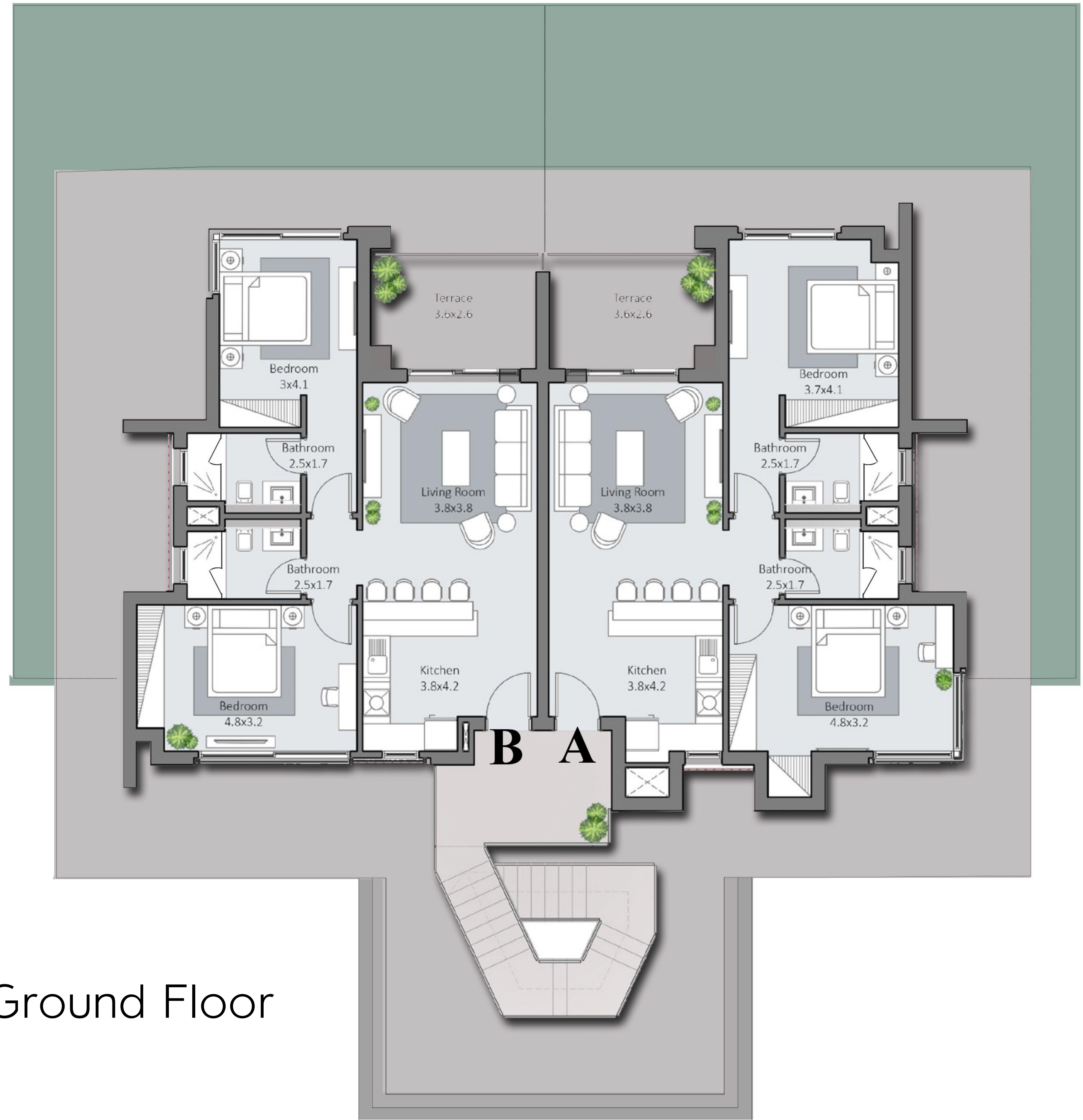
M1

A Apartments

| | |
|-----------------|---------|
| Indoor | 90 sqm |
| Covered Terrace | 10 sqm |
| Gross Area | 112 sqm |

B Apartments

| | |
|-----------------|---------|
| Indoor | 84 sqm |
| Covered Terrace | 10 sqm |
| Gross Area | 105 sqm |



Ground Floor

DISCLAIMER 1.Drawings are not to scale. 2.The architectural details, dimensions and area in this plan are based on Schematic Design information only, and final As-Built conditions may vary. 3.All units in this brochure are sold as unfurnished apartments, without furniture and furnishings, without white goods provisions, etc. 4.All images used in this brochure are for illustrative purposes only and do not represent the actual size, features, specifications, fittings, and furnishings. 5.Somabay reserves the right to make revisions/alterations, at its absolute discretion, and without liability.

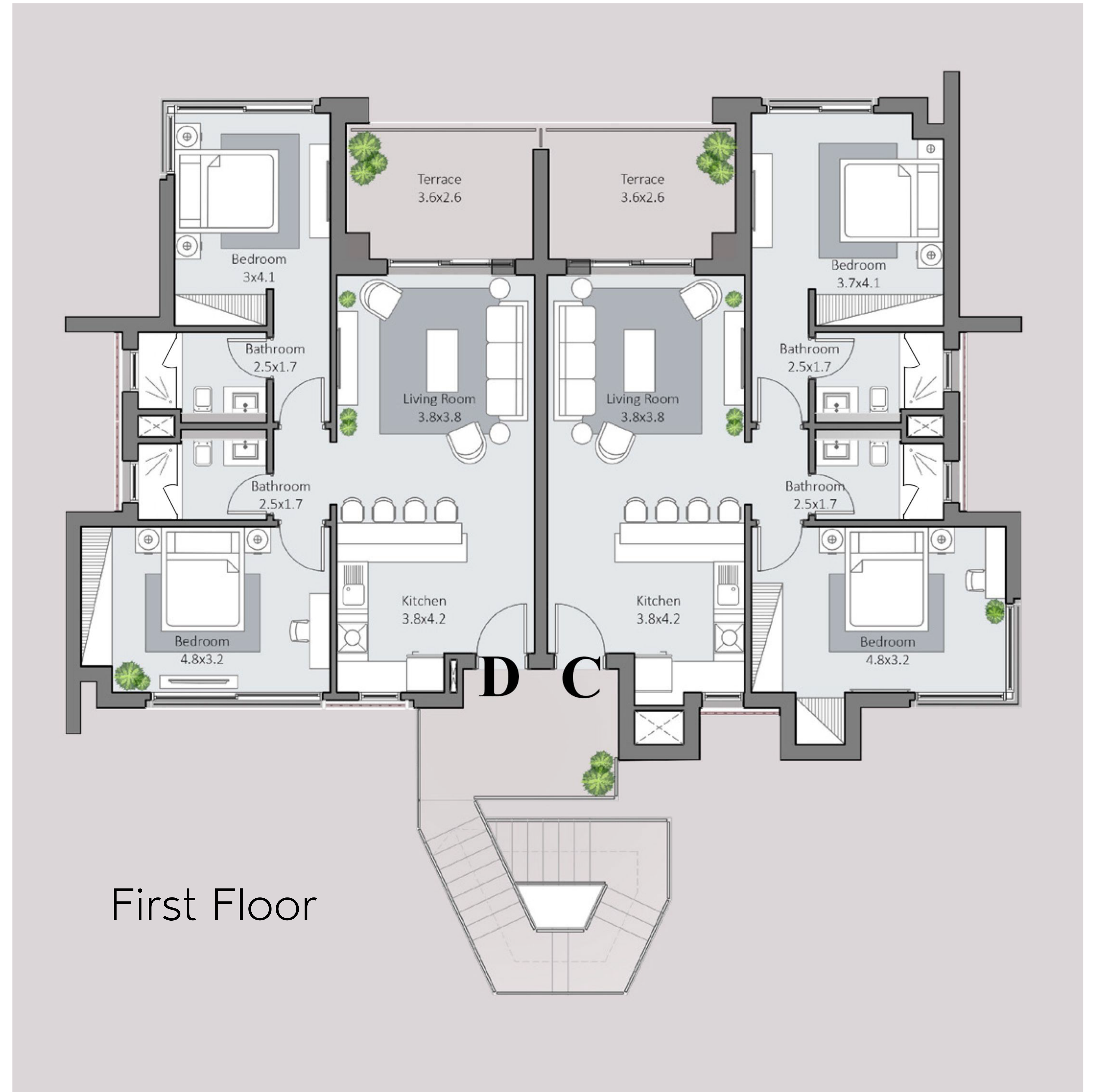
M1

C Apartments

| | |
|-----------------|---------|
| Indoor | 90 sqm |
| Covered Terrace | 10 sqm |
| Gross Area | 112 sqm |

D Apartments

| | |
|-----------------|---------|
| Indoor | 84 sqm |
| Covered Terrace | 10 sqm |
| Gross Area | 105 sqm |



First Floor

DISCLAIMER 1. Drawings are not to scale. 2. The architectural details, dimensions and area in this plan are based on Schematic Design information only, and final As-Built conditions may vary. 3. All units in this brochure are sold as unfurnished apartments, without furniture and furnishings, without white goods provisions, etc. 4. All images used in this brochure are for illustrative purposes only and do not represent the actual size, features, specifications, fittings, and furnishings. 5. Somabay reserves the right to make revisions/alterations, at its absolute discretion, and without liability.

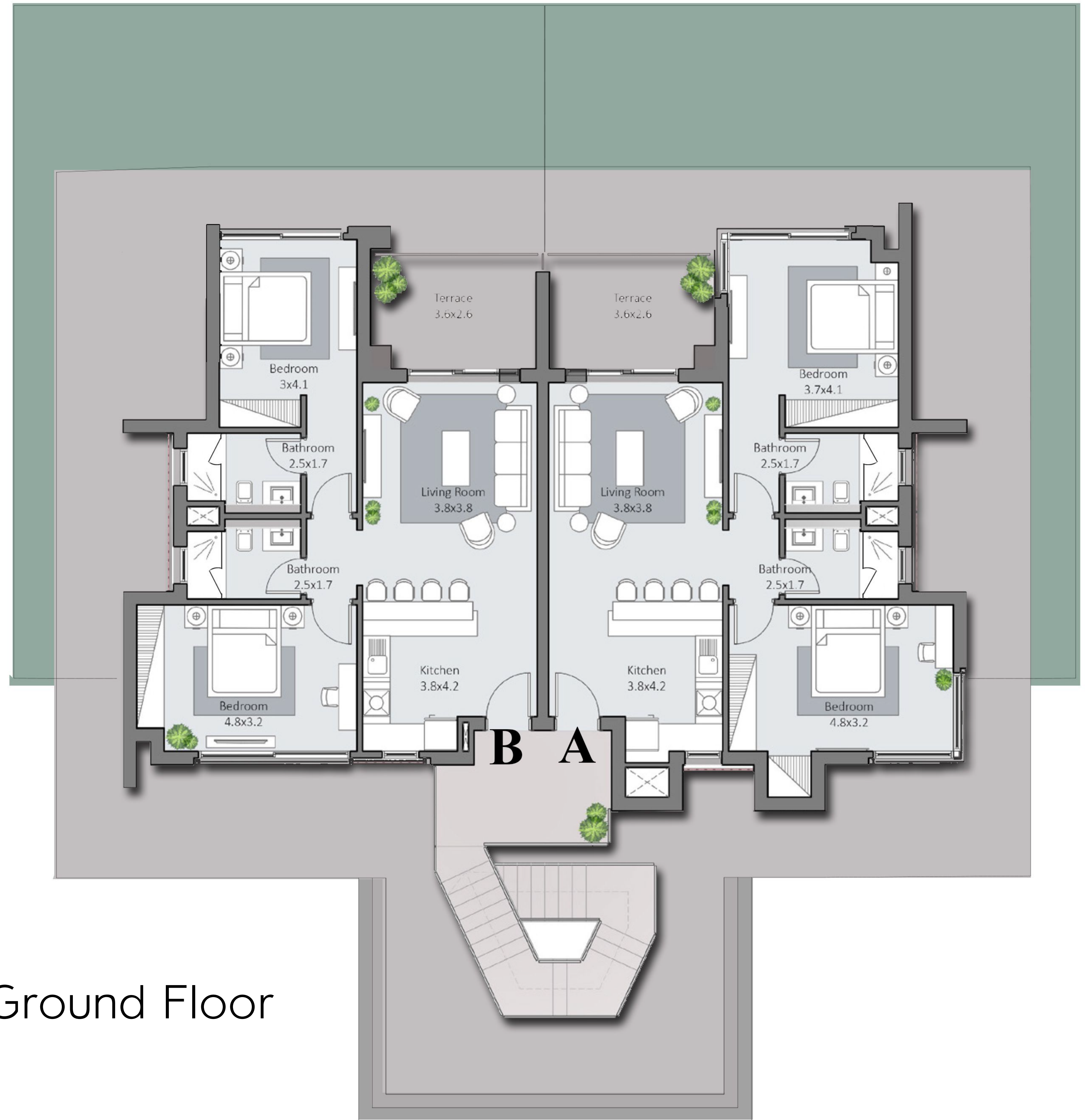
M2

A Apartments

| | |
|-----------------|---------|
| Indoor | 90 sqm |
| Covered Terrace | 10 sqm |
| Gross Area | 112 sqm |

B Apartments

| | |
|-----------------|---------|
| Indoor | 84 sqm |
| Covered Terrace | 10 sqm |
| Gross Area | 105 sqm |



Ground Floor

DISCLAIMER 1.Drawings are not to scale. 2.The architectural details, dimensions and area in this plan are based on Schematic Design information only, and final As-Built conditions may vary. 3.All units in this brochure are sold as unfurnished apartments, without furniture and furnishings, without white goods provisions, etc. 4.All images used in this brochure are for illustrative purposes only and do not represent the actual size, features, specifications, fittings, and furnishings. 5.Somabay reserves the right to make revisions/alterations, at its absolute discretion, and without liability.

M2

P Apartments

| | |
|-----------------|---------|
| Indoor | 137 sqm |
| Covered Terrace | 20 sqm |
| Gross Area | 171 sqm |



DISCLAIMER 1.Drawings are not to scale. 2.The architectural details, dimensions and area in this plan are based on Schematic Design information only, and final As-Built conditions may vary. 3.All units in this brochure are sold as unfurnished apartments, without furniture and furnishings, without white goods provisions, etc. 4.All images used in this brochure are for illustrative purposes only and do not represent the actual size, features, specifications, fittings, and furnishings. 5.Somabay reserves the right to make revisions/alterations, at its absolute discretion, and without liability.

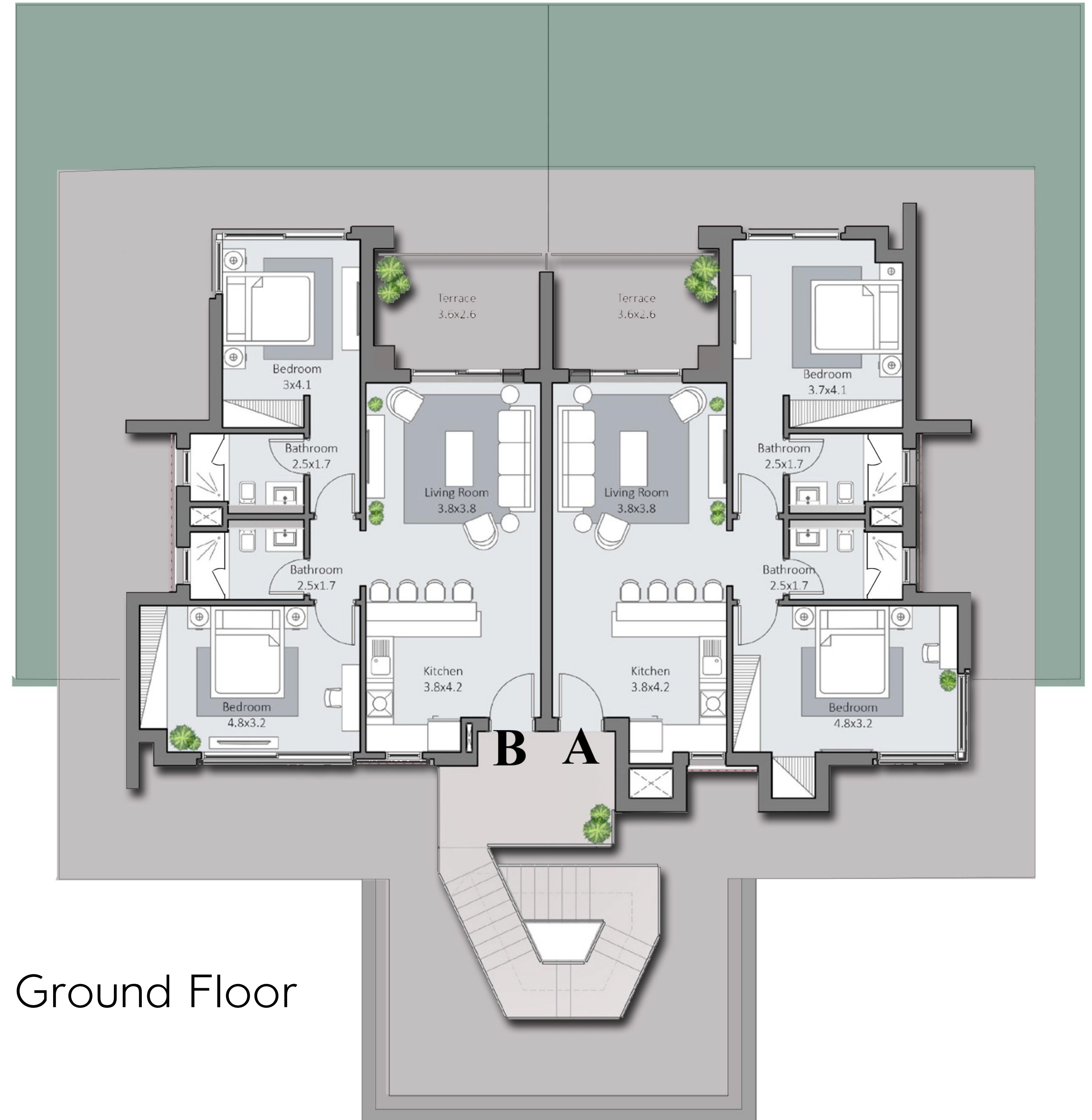
M3

A Apartments

| | |
|-----------------|---------|
| Indoor | 90 sqm |
| Covered Terrace | 10 sqm |
| Gross Area | 112 sqm |

B Apartments

| | |
|-----------------|---------|
| Indoor | 84 sqm |
| Covered Terrace | 10 sqm |
| Gross Area | 105 sqm |



Ground Floor

DISCLAIMER 1.Drawings are not to scale. 2.The architectural details, dimensions and area in this plan are based on Schematic Design information only, and final As-Built conditions may vary. 3.All units in this brochure are sold as unfurnished apartments, without furniture and furnishings, without white goods provisions, etc. 4.All images used in this brochure are for illustrative purposes only and do not represent the actual size, features, specifications, fittings, and furnishings. 5.Somabay reserves the right to make revisions/alterations, at its absolute discretion, and without liability.

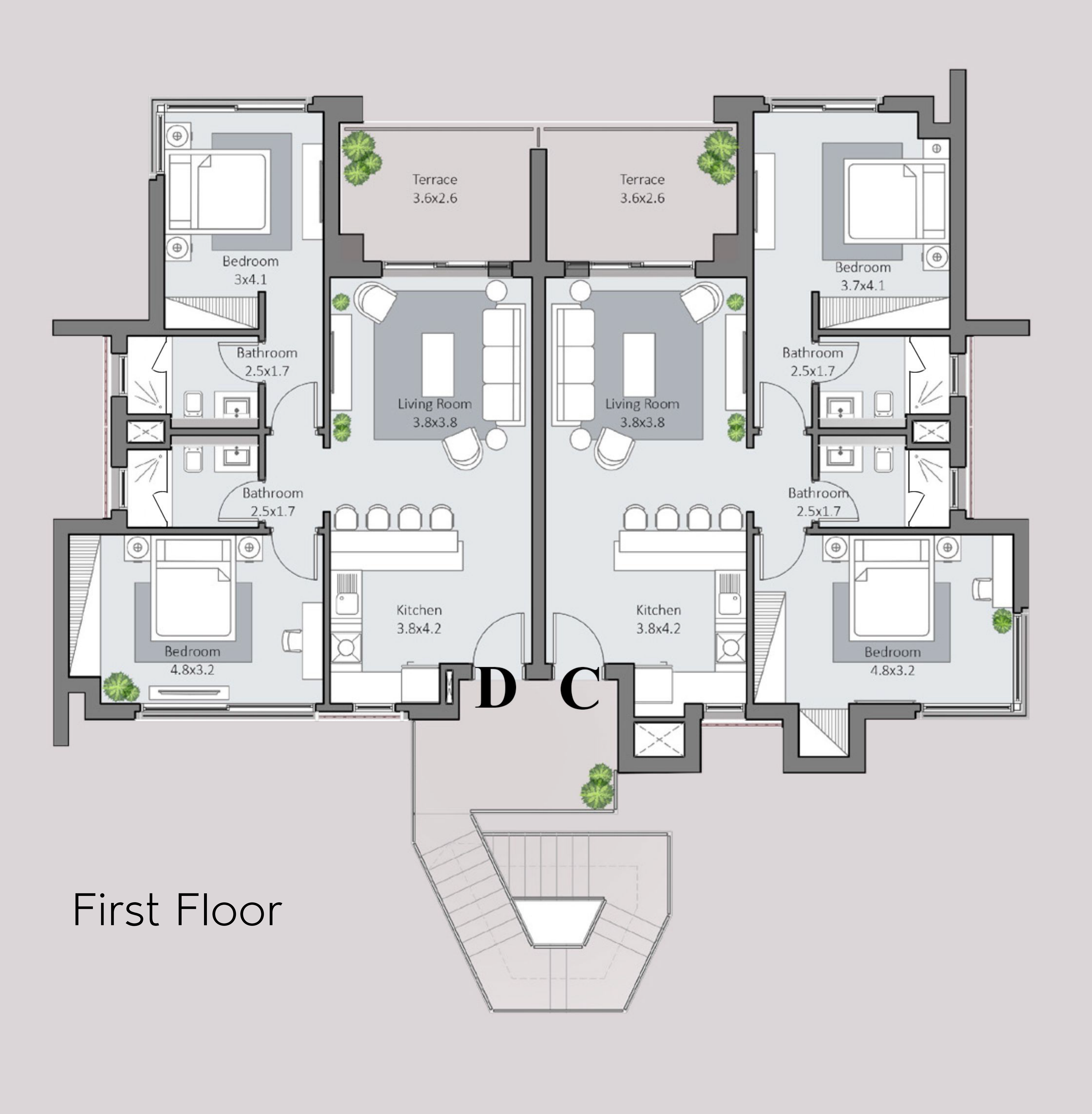
M3

C Apartments

| | |
|-----------------|---------|
| Indoor | 90 sqm |
| Covered Terrace | 10 sqm |
| Gross Area | 112 sqm |

D Apartments

| | |
|-----------------|---------|
| Indoor | 84 sqm |
| Covered Terrace | 10 sqm |
| Gross Area | 105 sqm |



First Floor

DISCLAIMER 1.Drawings are not to scale. 2.The architectural details, dimensions and area in this plan are based on Schematic Design information only, and final As-Built conditions may vary. 3.All units in this brochure are sold as unfurnished apartments, without furniture and furnishings, without white goods provisions, etc. 4.All images used in this brochure are for illustrative purposes only and do not represent the actual size, features, specifications, fittings, and furnishings. 5.Somabay reserves the right to make revisions/alterations, at its absolute discretion, and without liability.

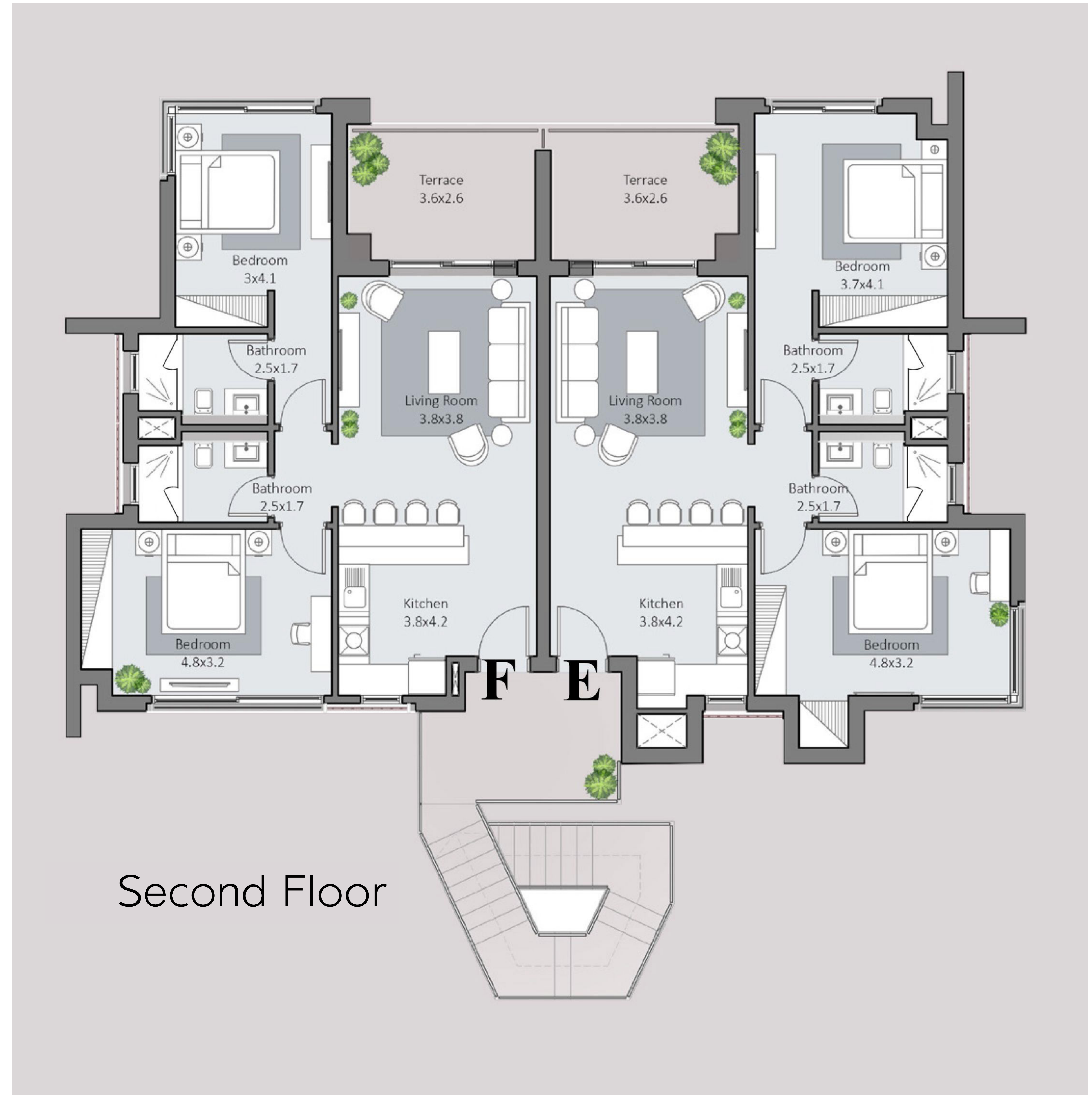
M3

E Apartments

| | |
|-----------------|---------|
| Indoor | 90 sqm |
| Covered Terrace | 10 sqm |
| Gross Area | 112 sqm |

F Apartments

| | |
|-----------------|---------|
| Indoor | 84 sqm |
| Covered Terrace | 10 sqm |
| Gross Area | 105 sqm |



Second Floor

DISCLAIMER 1. Drawings are not to scale. 2. The architectural details, dimensions and area in this plan are based on Schematic Design information only, and final As-Built conditions may vary. 3. All units in this brochure are sold as unfurnished apartments, without furniture and furnishings, without white goods provisions, etc. 4. All images used in this brochure are for illustrative purposes only and do not represent the actual size, features, specifications, fittings, and furnishings. 5. Somabay reserves the right to make revisions/alterations, at its absolute discretion, and without liability.

A low-angle, close-up photograph of a person's legs and feet. The person is wearing a white, flowing, ruffled dress and is standing on a sandy beach. The lighting is dim, suggesting dusk or dawn, with the sand and dress appearing in shades of grey and white against a dark background. The text 'MESCA Hotel' is overlaid in the center of the image.

MESCA
Hotel

MESCA Hotel

Signature Beach-Front Hospitality.

Mesca's design-led luxury hotel is an elegant amphitheatre of sea, sky and sand, redefining waterfront hospitality on the Red Sea.

Inspired by nature to combine utmost comfort with worlds of unparalleled privacy, the signature five star retreat boasts streamlined spacious rooms, and a colorful array of beachfront activities, as well as round-the-clock concierge services for you to retreat with loved ones and dream with eyes wide open.





MESCA
BEACH

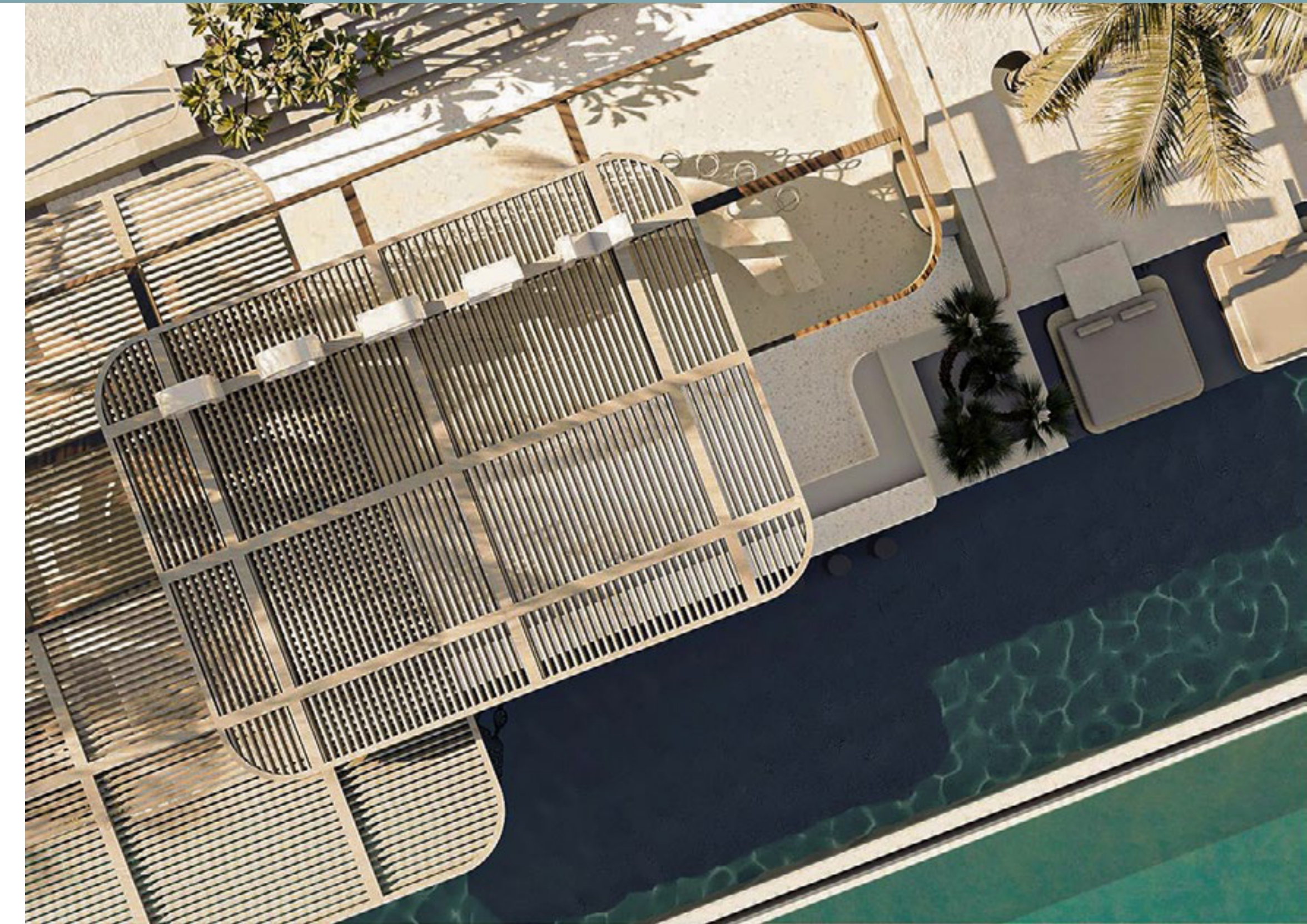
Mesca Beach

Mesca Beach offers a unique blend of natural beauty and modern amenities, creating the perfect seaside retreat. Featuring stunning natural lagoons and an extended beach, the area provides a serene escape with sunbeds and canopies for ultimate relaxation. Families can enjoy a dedicated kids' area, while adventure seekers can explore the activation deck and activities zone. For book lovers, the beach library offers a quiet escape by the shore. The exclusive Mesca Beach Pool provides a refreshing retreat, complemented by essential utilities and a vibrant events area for social gatherings. Whether you're looking for relaxation or entertainment, Mesca Beach has something for everyone.



Mesca Beach Pool

Designed for those who seek refined relaxation, Mesca Beach Pool offers an exclusive beachfront experience with unparalleled services. Lounge by the infinity pool as you take in uninterrupted views of the Red Sea, with attentive poolside service ensuring your every need is met. Enjoy a selection of handcrafted cocktails and gourmet bites from the pool bar, or indulge in a private cabana for the ultimate retreat. Whether you're basking in the sun or enjoying a serene evening by the water, Mesca Beach Pool is the epitome of effortless luxury by the shore.



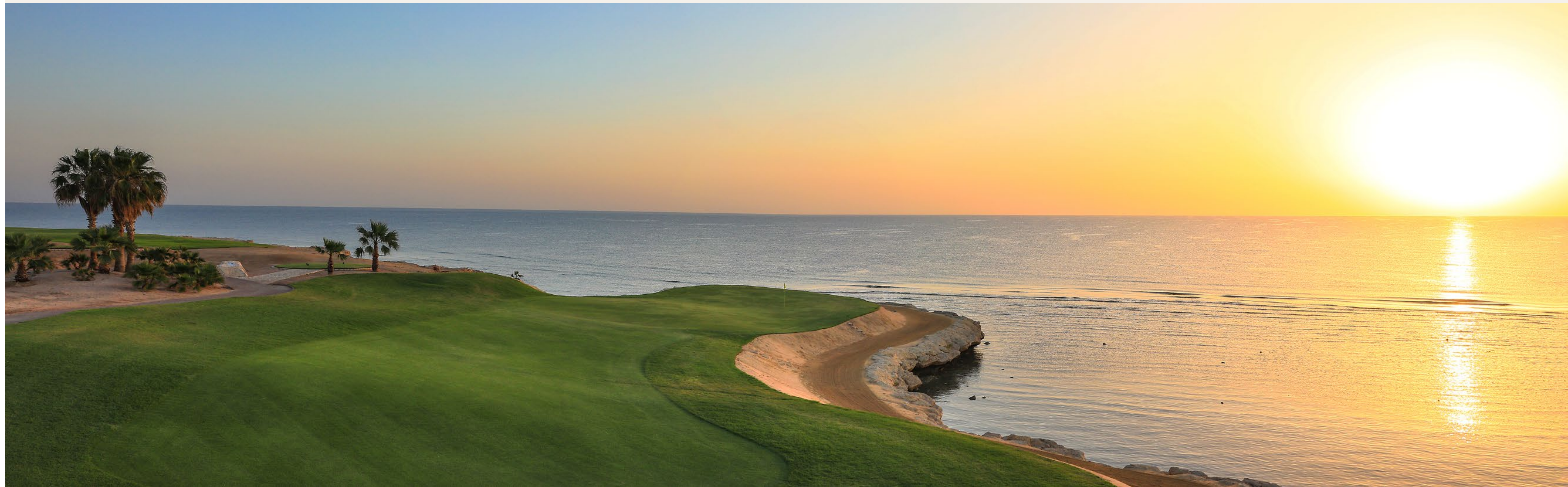
An aerial photograph of a long, narrow wooden pier extending from the bottom center towards the top center of the frame. The pier is made of light-colored wood and has a small, square, open-sided structure at its end. A person in a white bikini is standing on the pier near this structure. The water is a vibrant turquoise color with visible ripples and some darker patches of seabed or coral. The overall scene is serene and tropical.

THE SOMABAY EXPERIENCE.

The Cascades Championship Golf Course.

Opening onto spectacular 360 degree views of lush golf greens, azure Red Sea hues and earthy desert tones, The Cascades 18 hole, par 72 Championship Golf Course is designed by legendary golfer Gary Player to ignite guests' love for the sport.

Ranked as one of the leading golf courses in Africa, The Cascades Championship Golf Course boasts a state-of-the-art academy, guaranteeing non-stop excitement for amateurs and professionals alike.



Somabay Hotels.

Somabay opens your eyes on a variety of hospitality options to suit every need. From design-led hotels to budget accommodation with impeccable service, the destination guarantees a memorable stay, as well as signature treatment all year.

Kempinski Somabay

Sheraton Somabay

The Cascades Golf Resort, Spa & Thalasso

Robinson Club

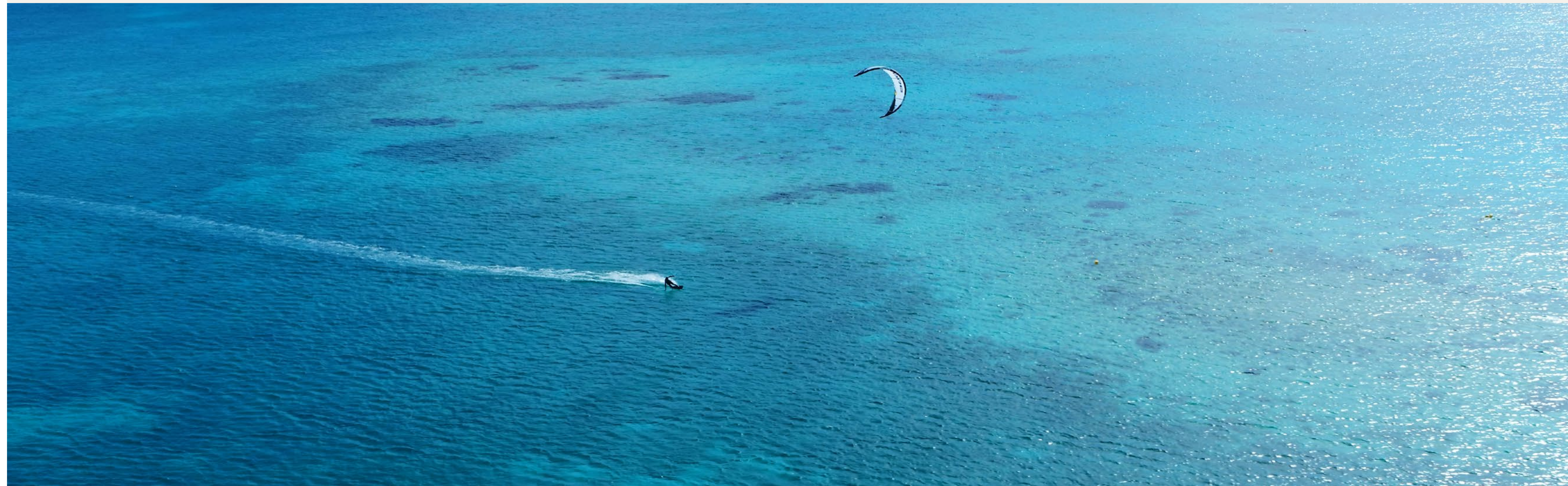
The Breakers



7 Bft The Kite House.

Spend your day gliding across flat idyllic waters at one of the top 3 Kite Surfing spots in the world, offering 365 days of incomparable wind and natural beauty to inspire. Opening onto a tranquil bay, Somabay embraces pristine beaches and perfect off-shore and side-shore winds ranging from 4 to 8 Bft.

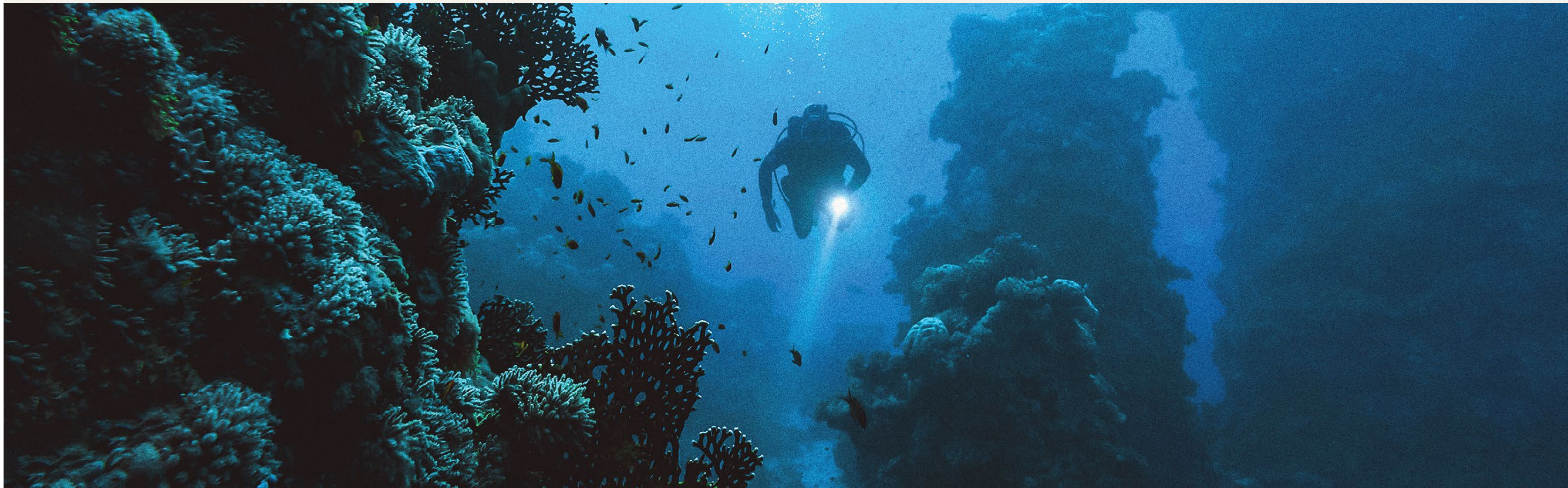
7Bft's professional team of instructors are committed to making your kite experience safe, fun and complete by offering exclusive teaching and testing weeks with the latest Naish and Carved equipment. The Kitehouse is an ideal sea-side escape, offering everything you need from fresh food and refreshing cocktails, as you take in heavenly bay views from the restaurant or bar's open terrace.



ORCA Dive Center.

Escape for hours at sea with ORCA Dive Center and allow Somabay's captivating dive sites and renowned colorful House Reef to leave you in awe. Ideal for beginners and advanced divers alike, our purpose-built diving center is one of the largest and most well-equipped in the Red Sea, led by an international team of instructors who ensure you explore a treasure trove of wonders with safety and ease

Easily accessible via a 420 meter long jetty that stretches over a kilometer, the House Reef is serviced by electric cards, available to transport equipment and divers for an ultimate fun and hassle-free experience like no other. Boasting a large turquoise-blue lagoon with sheltered waters ideal for training, ORCA dive center is fully equipped with top-of-the-line gear, in addition to snorkeling equipment, in-house photo and video facilities to meet all the needs of the avid underwater photographer and explorer.



The Cascades Spa & Thalasso.

Luxury award winner 'The Cascades Spa & Thalasso' invites you to uncover the most exquisite spa experience in the Middle East. Rolling out on 7,500 m2, the spa is an oasis of calm, crowning a front-row seat on the Red Sea's pristine coastline while boasting 65 treatment rooms spanning traditional massages, beauty treatments, hydrotherapy and aesthetic procedures. Take a plunge in our 830 m2 Thalasso-Tonic hydrotherapy pool and allow the wonders of the Red Sea to restore balance to your mind, body and soul.



Somabay Marina.

Somabay's comprehensive Marina is a peaceful haven for immaculate sea views and a unique location for nautical fans wishing to dock their boats at a competitive price. Boasting world-class services and conditions for mooring, the Marina offers a wide array of quality services and facilities directly available at quayside, so you can enjoy sailing smoothly through life.



S.cape Beach.

Opening onto a secluded tranquil bay, S.cape Beach's pristine beach stretches along Somabay's azure coastline to create a timeless experience in paradise for those wishing to decelerate, swim or sunbathe in a one-of-a-kind luxury beachfront setting. When the sun descends, S.cape Beach transforms into a magical happening spot, perfected by chill-out beats, refreshing cocktails and gourmet bites.



0310022



SOMABAY

16390

somabay.com

info@somabayrealestate.com